

# ColorWorks C6000/C6500 series Gloss vs Matte



After the successful launch of the ColorWorks C6000/C6500 series, Epson introduced four new models to the range, which used a matte black ink instead of gloss. These new models allowed for the creation of crisp, sharp black text and images on matte label media.

Model	New SKU (Gloss)	New SKU (Matte)
CW-C6000Ae 4" printer w/ autocutter	C31CH76102	C31CH76102mk
CW-C6000Pe 4" printer w/ peeler	C31CH76202	C31CH76202mk
CW-C6500Ae 8" printer w/ autocutter	C31CH77102	C31CH77102mk
CW-C6500Pe 8" printer w/ peeler	C31CH77202	C31CH77202mk
SJIC36P(K): Ink cartridge for ColorWorks C6500/C6000 (Black)	C13T44C140	
SJIC36P(MK): Ink cartridge for ColorWorks C6500/C6000 (Black)		C13T44C540

## Gloss vs Matte comparison

Both the gloss black and matte black inks are highly-durable, pigment-based inks and both have been BS5609 certified<sup>1</sup>. The matte black ink offers a darker black on matte media and a richer image on plain media. The gloss black ink, similar to the C7500G inks, is able to print on a wider variety of substrates. The same cyan, magenta, and yellow inks are used with both black inks.

## Product application

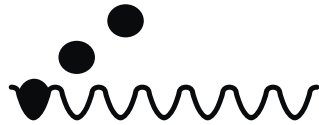
The gloss black ink supports the widest range of media.

Media	Gloss black ink SJIC35P(BK) UltraChrome® DL	Matte black ink SJIC35P(MK) UltraChrome DL
Plain paper – uncoated	Good image	Richer image – darker black
Matte paper – coated	Good image	Richer image – darker black
Matte synthetic – coated	Good image, BS5609 certified <sup>1</sup>	Richer image – darker black, BS5609 certified <sup>1</sup>
Textured paper	Good image	Richer image – darker black
Low gloss paper – coated	Excellent image	Good image
Semi-gloss paper – coated	Excellent image	Not recommended
High gloss paper – coated	Excellent image	Not recommended
High gloss synthetic – coated	Excellent image	Not recommended

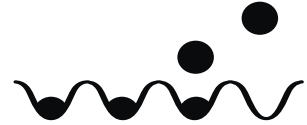
# Technical details

The primary difference is the size of the pigment particles:

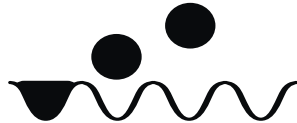
Glossy media has a slick surface which has extra fine pores. For proper adhesion, the pigment particles must be especially small to penetrate the surface and achieve proper bonding



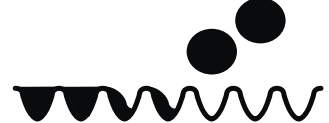
On matte surfaces, this same characteristic results in the pigment settling extra deep in the pores. This causes the image to appear slightly muted; especially the case of black inks.



Epson's matte black ink has larger pigment particles which remain closer to the surface yielding a more vibrant image on matte materials.



On glossy surfaces, these larger pigment particles struggle to bond to the fine pores. This results in insufficient drying of the ink and affects image durability.

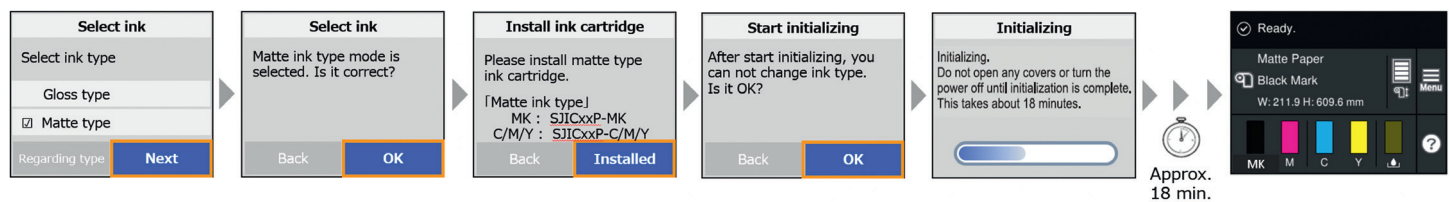


It is important to note that the gloss black ink on matte media creates a good image and is acceptable in most circumstances.

Ink safety data sheets can be found on the [Epson.com](https://www.epson.com) support page for each printer

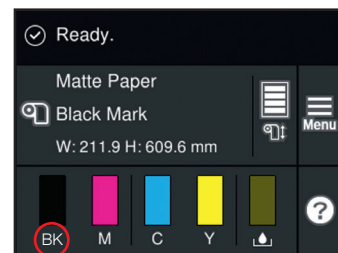
## Initialisation process

To set up a printer to use matte black ink, follow these steps when the printer is turned on for the first time:

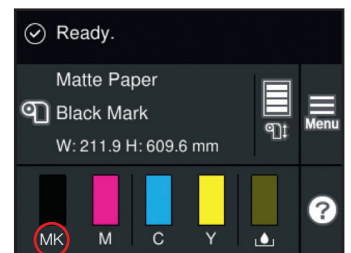


Note that the front panel will show whether the printer is set up using gloss black ink or matte black ink.

To help prevent user error, the gloss and matte black inks are keyed differently, so the printer will flag the user with an error message if the wrong cartridge is installed.



Gloss black



Matte black

## Recommended printer

If it is known that ALL media to be printed on is matte, the matte printer & ink is the best choice.

If printing is required on glossy materials, even if only occasionally, the gloss printer & ink is recommended. If the range of applications is not certain, the gloss printer & ink is recommended. Both inks have BS5609 certification, so that is not a factor.

1 Requires BS5609-certified label material for use with printer and ink system.